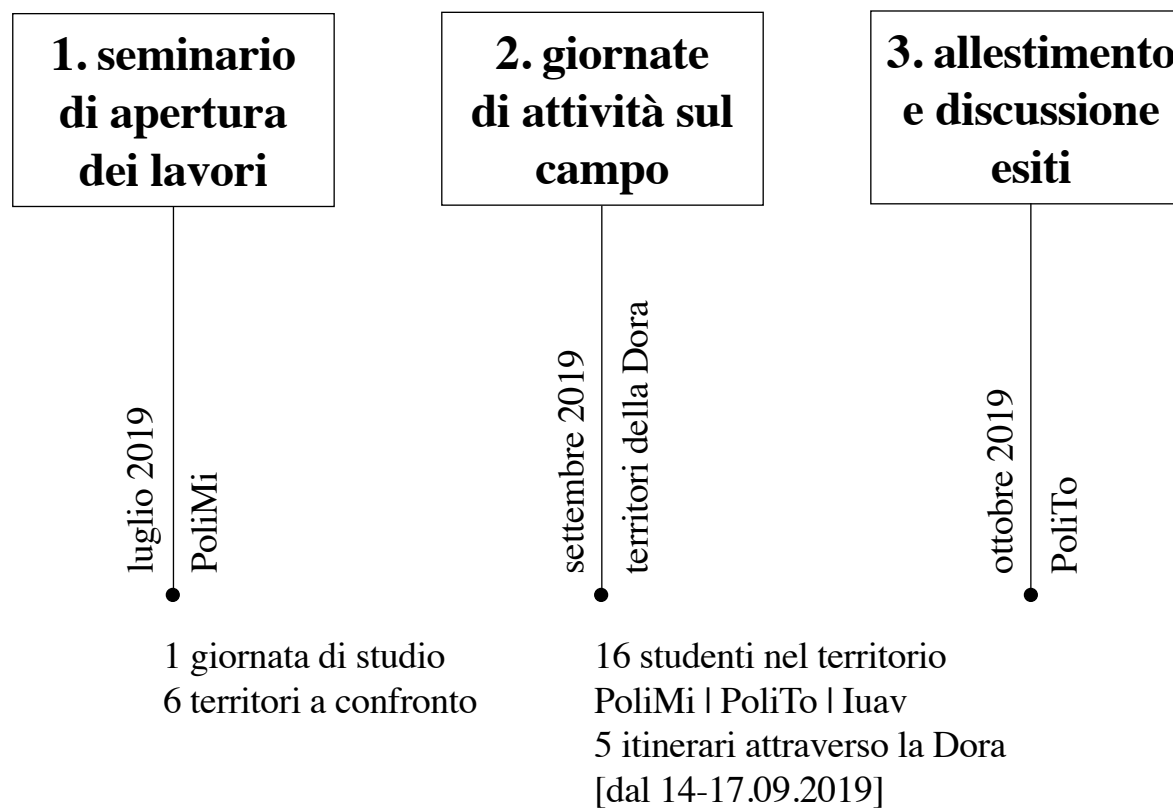


**l'atelier di esplorazione territoriale
per il bacino della *dora baltea***

Politecnico di Milano, Politecnico di Torino,
Università Iuav di venezia

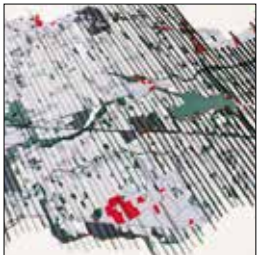
cristina renzoni, ettore donadoni, silvia lanteri



1. seminario di apertura



natisone

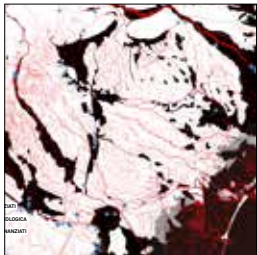


marzenego

bacchiglione

seveso, lambro

dora baltea

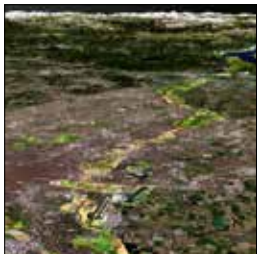


Giornata di studi | territori a confronto

Politecnico di Milano, luglio 2019 [data da confermare]

mattina | un programma europeo, un percorso di concertazione locale e di definizione partecipata delle azioni

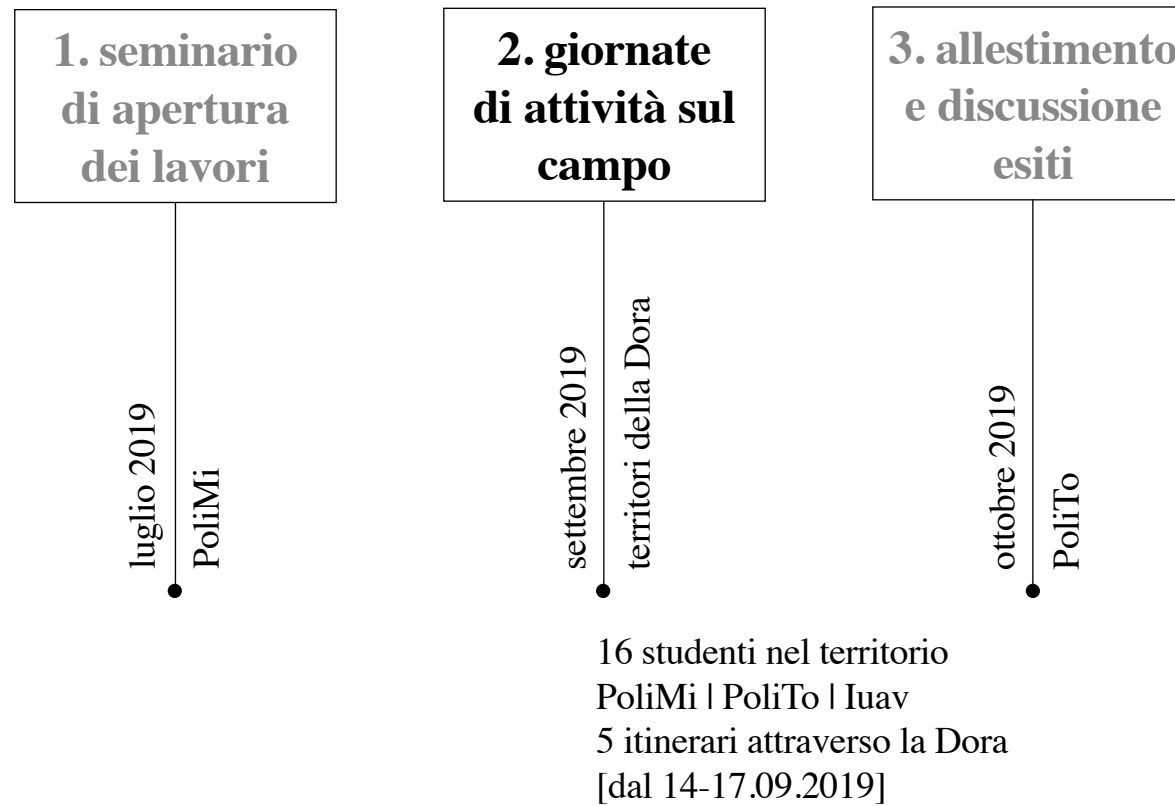
- *saluti istituzionali / apertura lavori*
- *EauConcert II: concertazione e valorizzazione degli ecosistemi fluviali*
- *Contratto di fiume Dora Baltea*
- *Alcuni temi di lavoro a partire dal territorio*

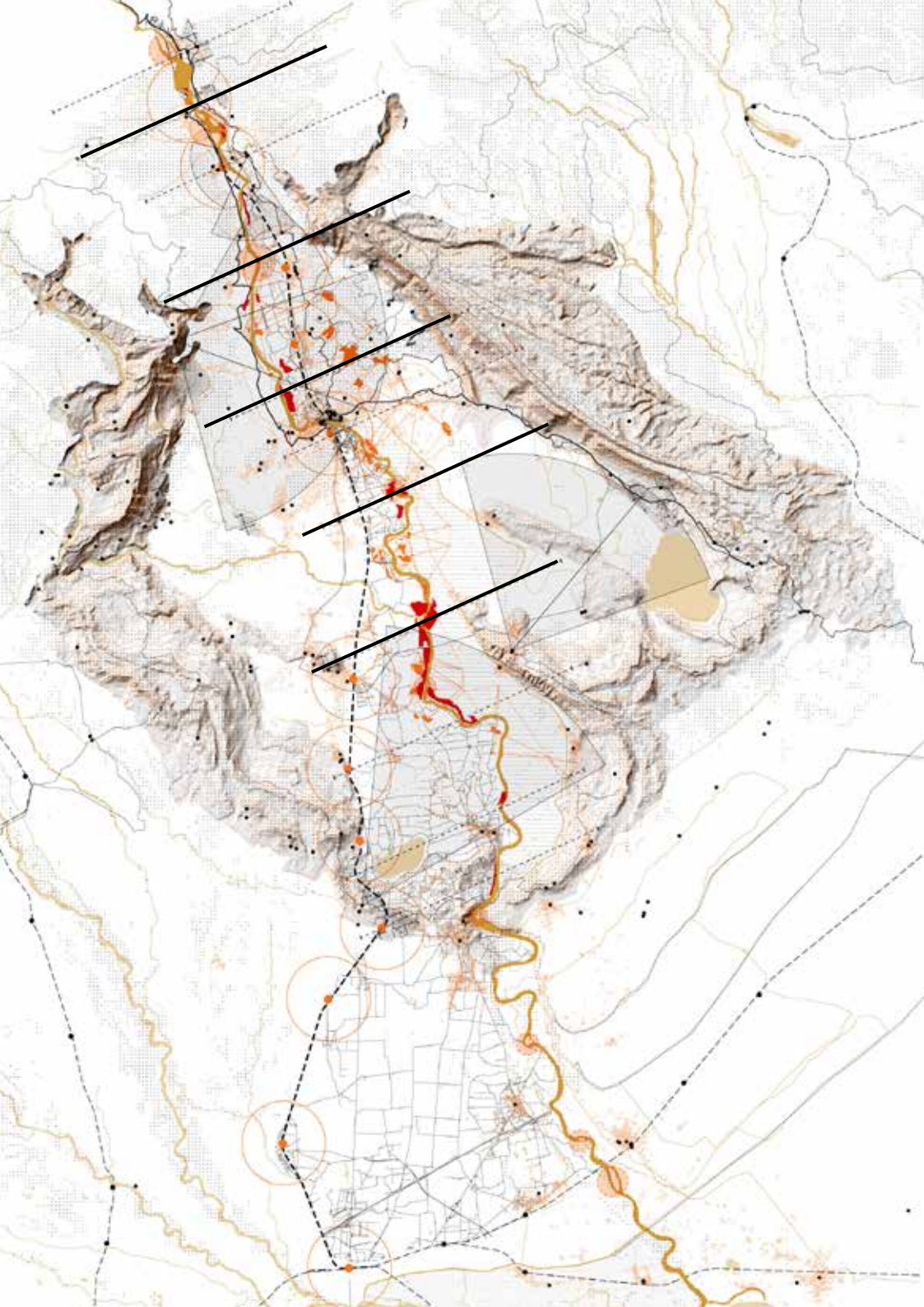


pomeriggio | territori fluviali a confronto
tra ricerca, didattica, istituzioni e comunità locali

- *visioni territoriali, esperienze e progetti dai territori del Natisone, Marzenego, Bacchiglione, Seveso, Lambro*



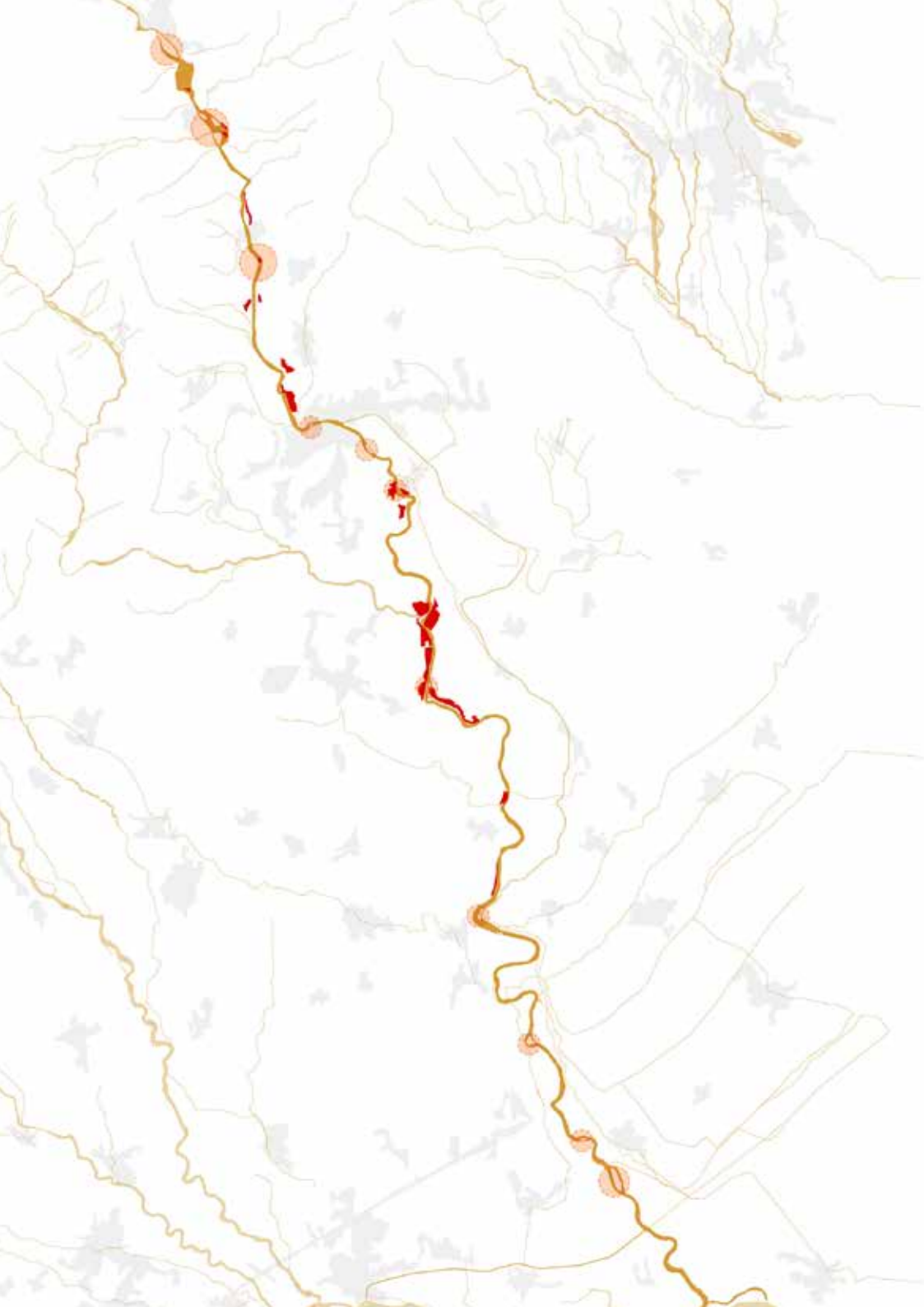




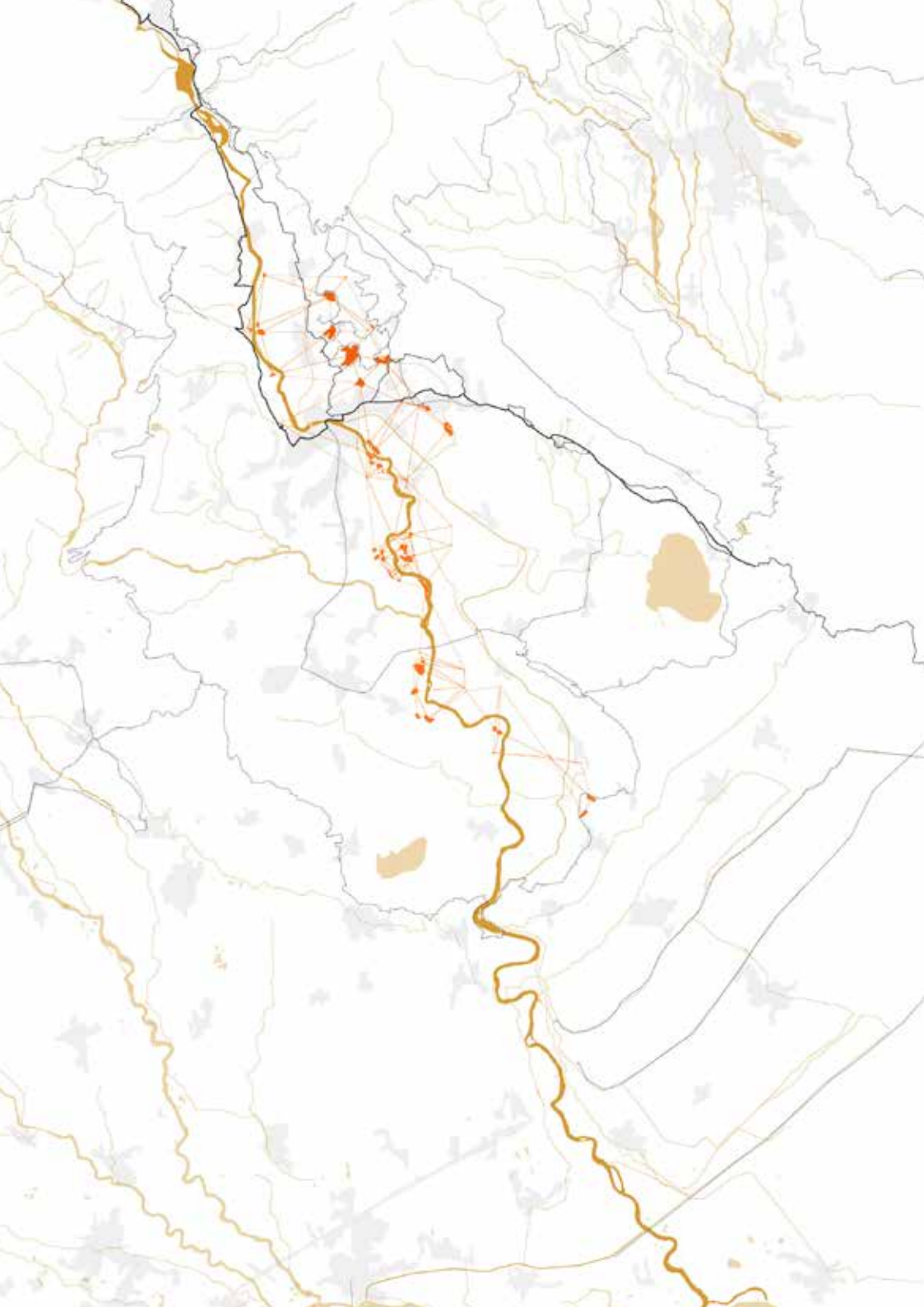
esplorazioni territoriali: 5 sezioni/itinerari

temi / ambiti di lavoro

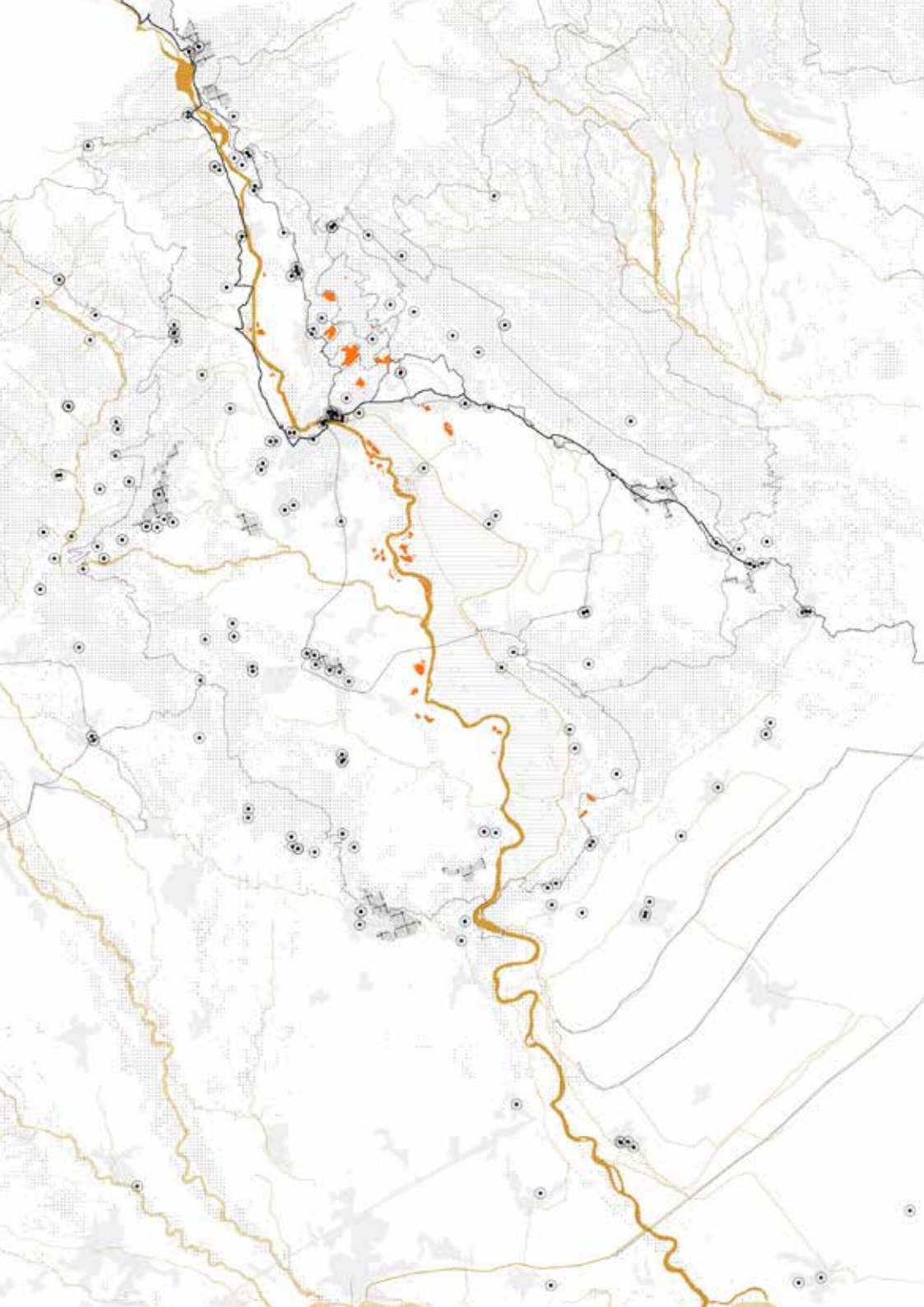
aree umide



temi / ambiti di lavoro

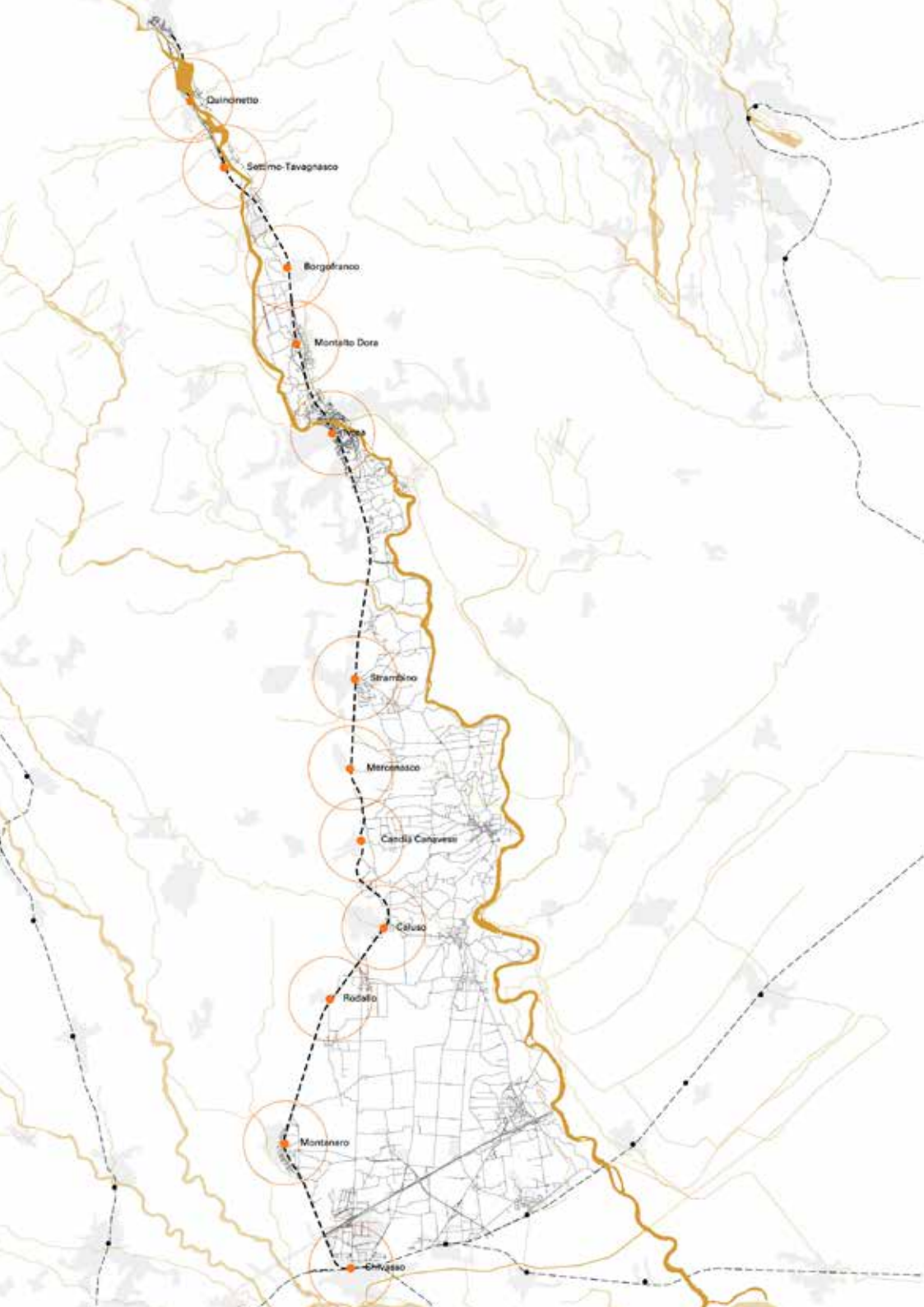


laghi



temi / ambiti di lavoro

beni culturali / luoghi notevoli



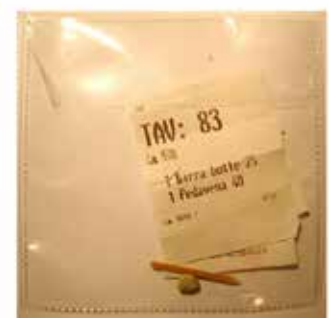
temi / ambiti di lavoro

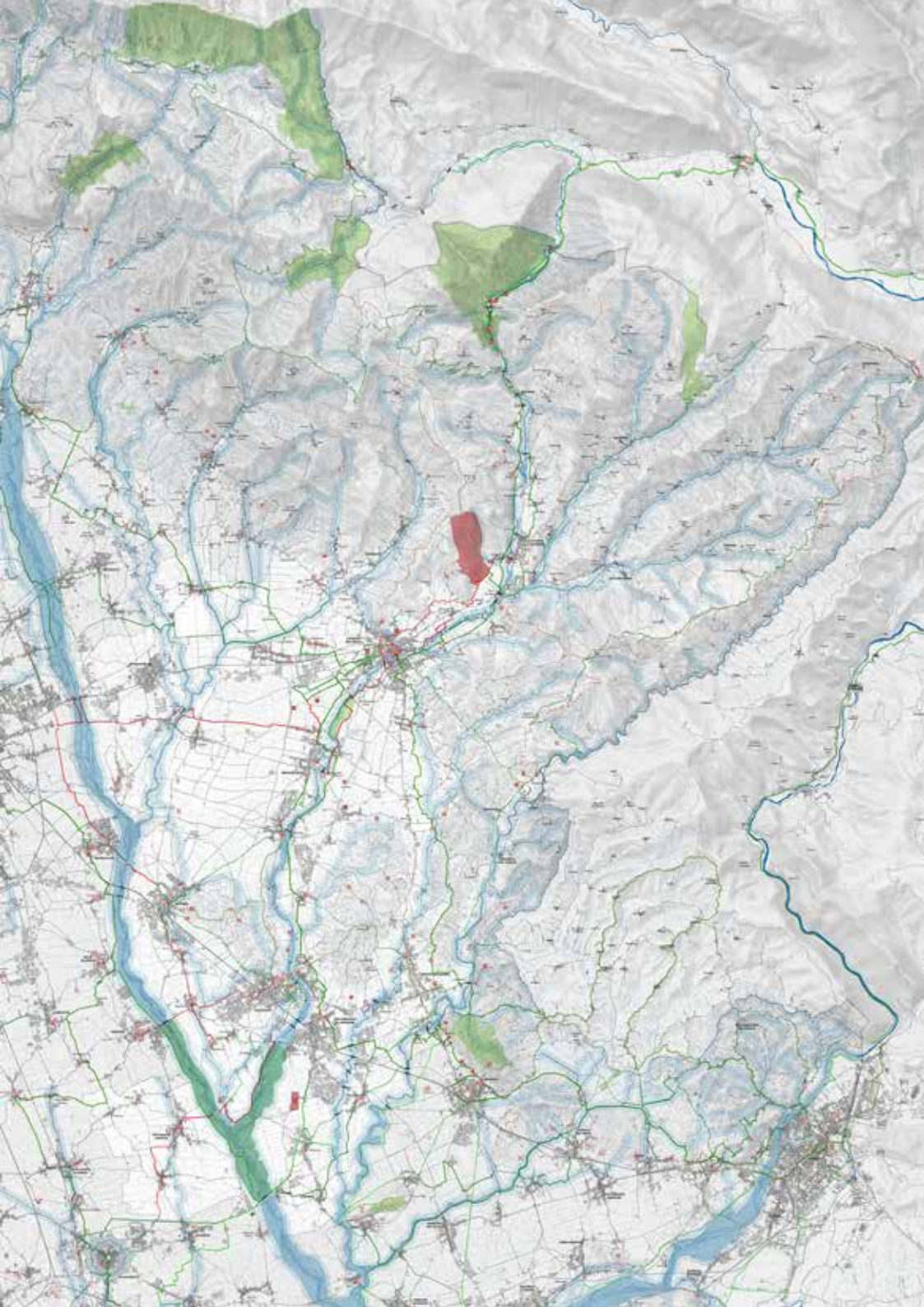
stazioni ferroviarie



attraversamenti | esplorazioni territoriali

* Iuav 2015



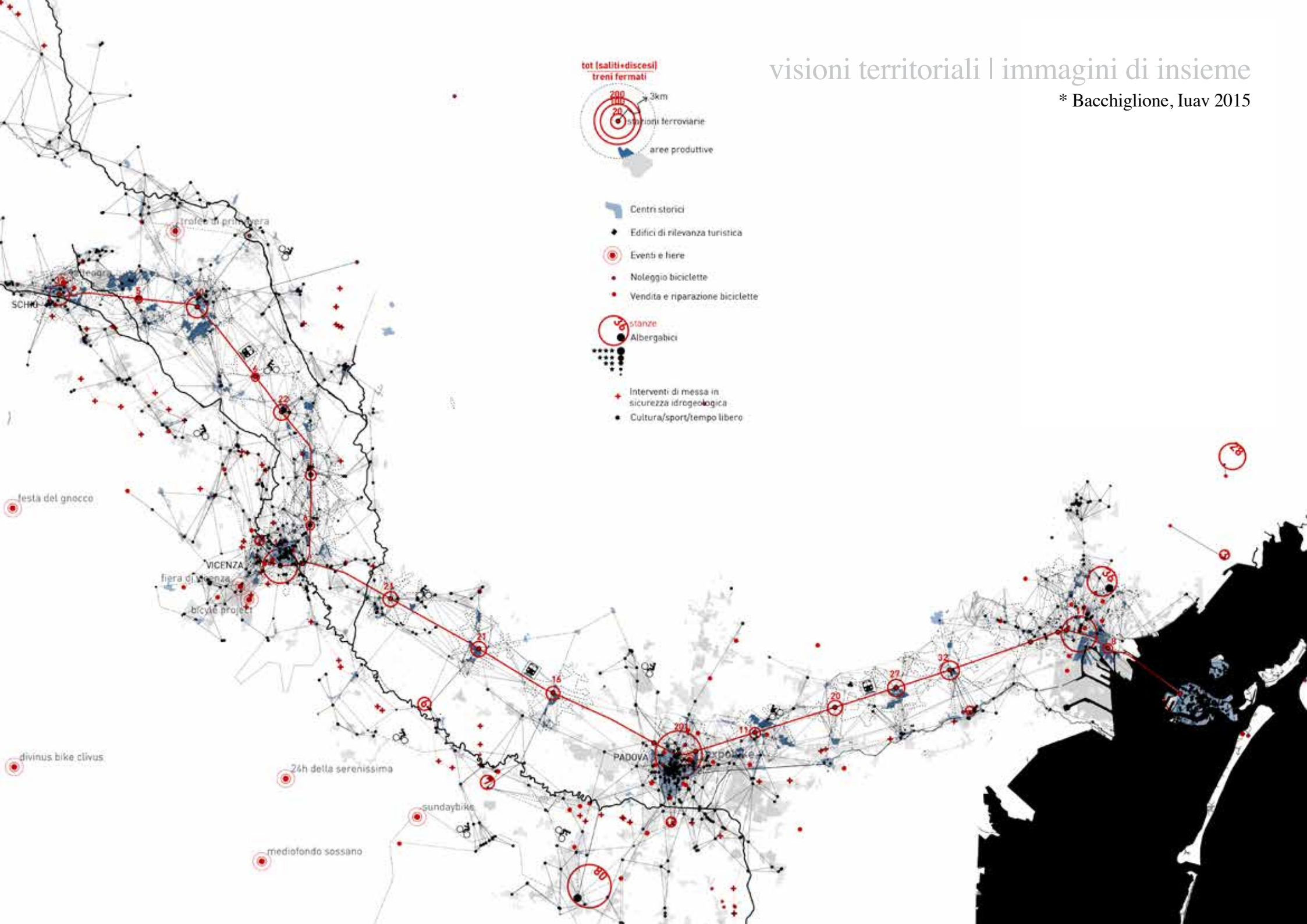


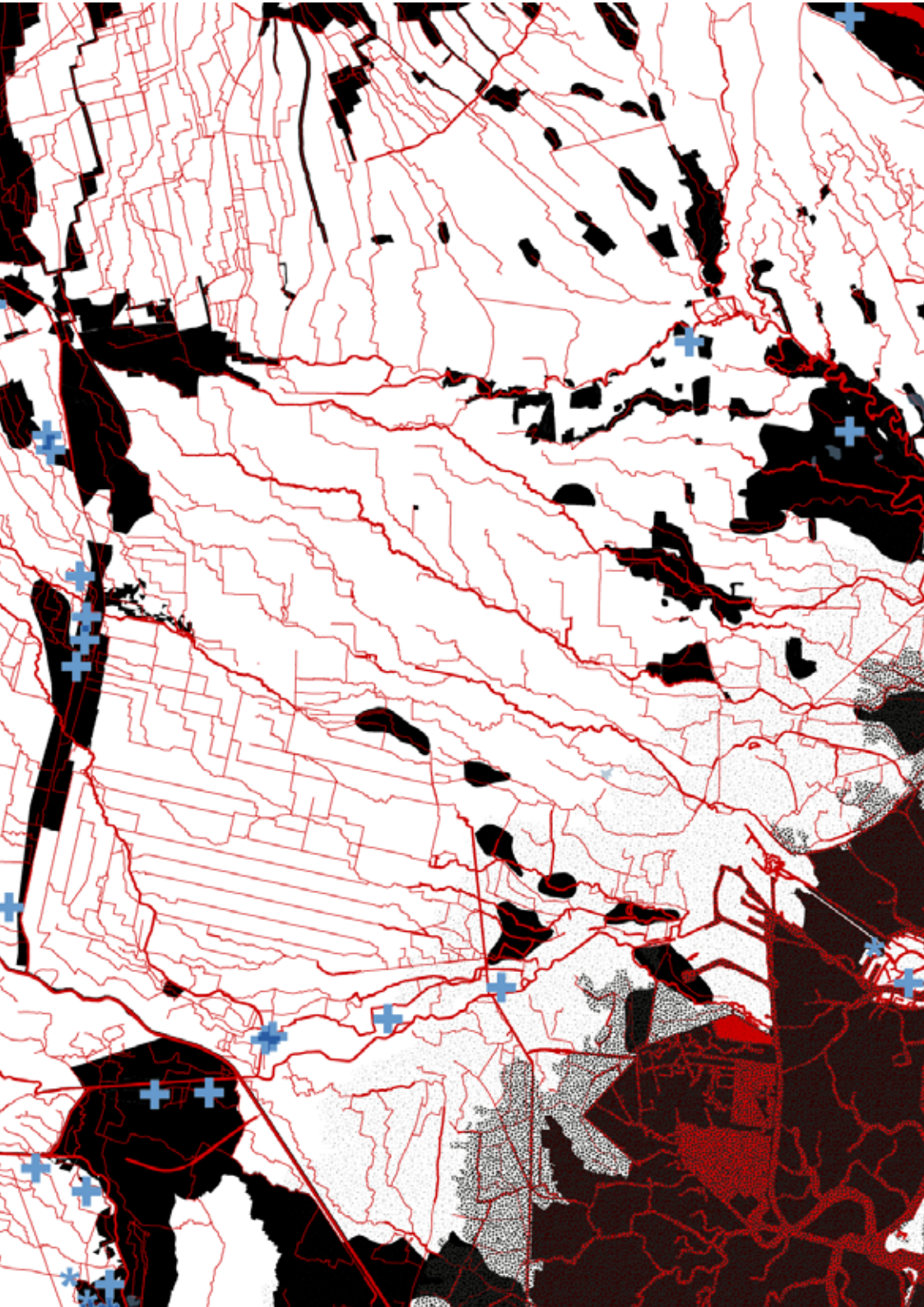
visioni territoriali | immagini di insieme

*Natisone, Iuav 2019

visioni territoriali | immagini di insieme

* Bacchiglione, Iuav 2015



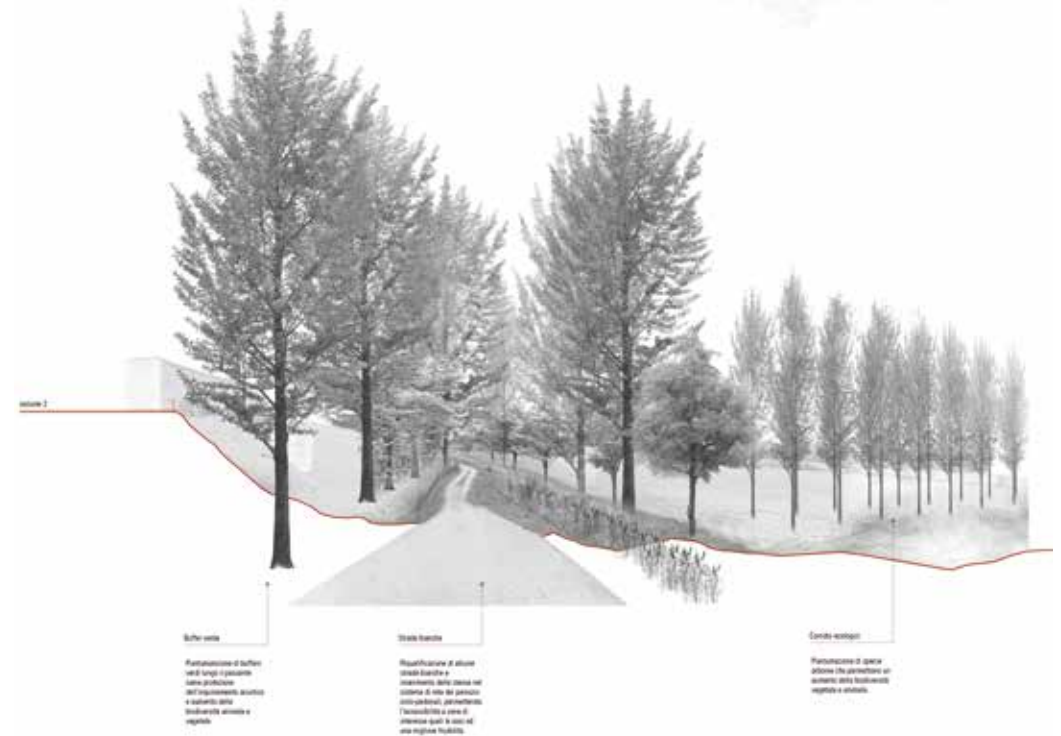
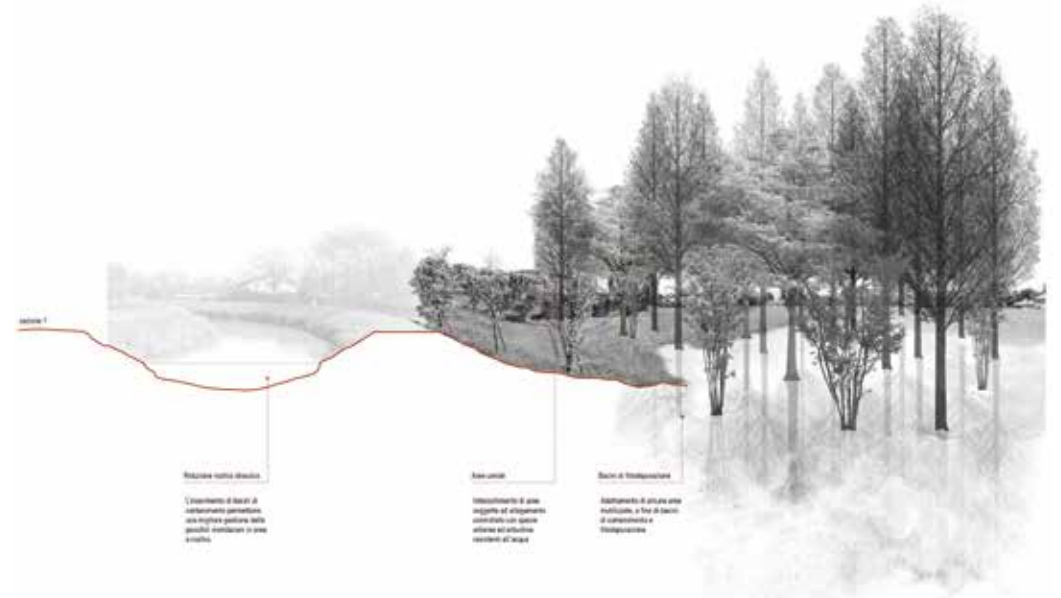
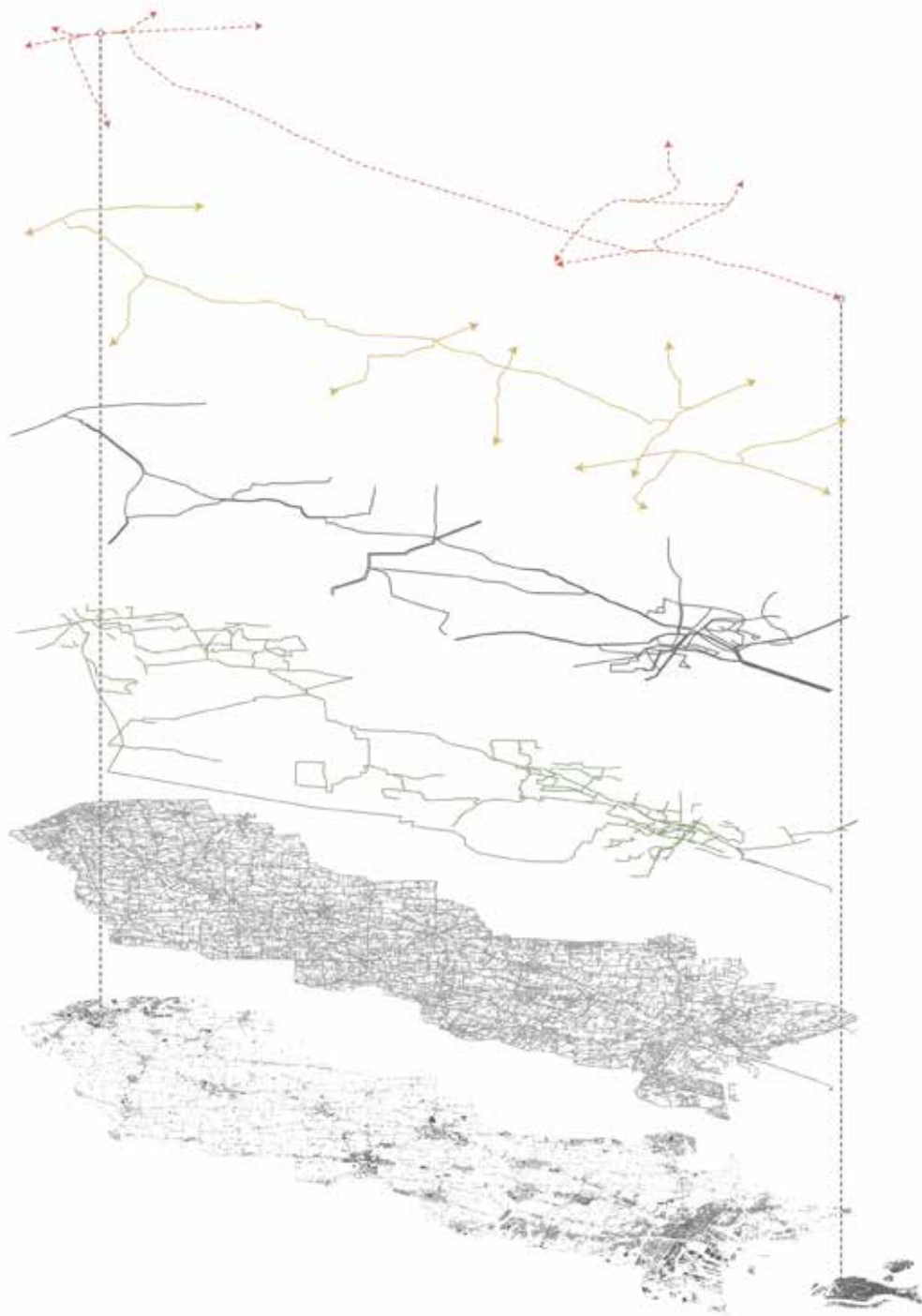


visioni territoriali | immagini di insieme

* Bacchiglione, Iuav

interpretare sistemi territoriali e luoghi

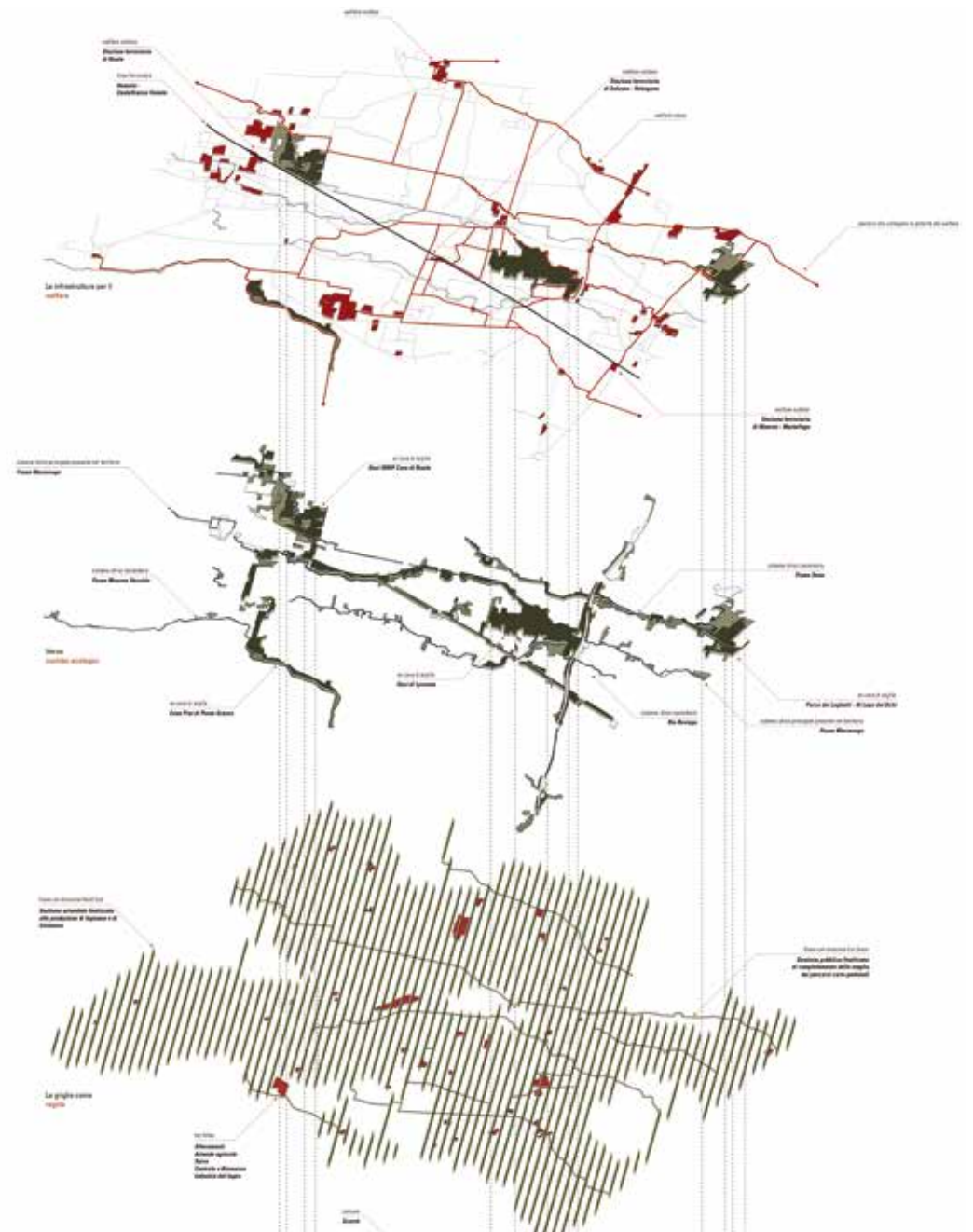
* Marzenego, Iuav 2015

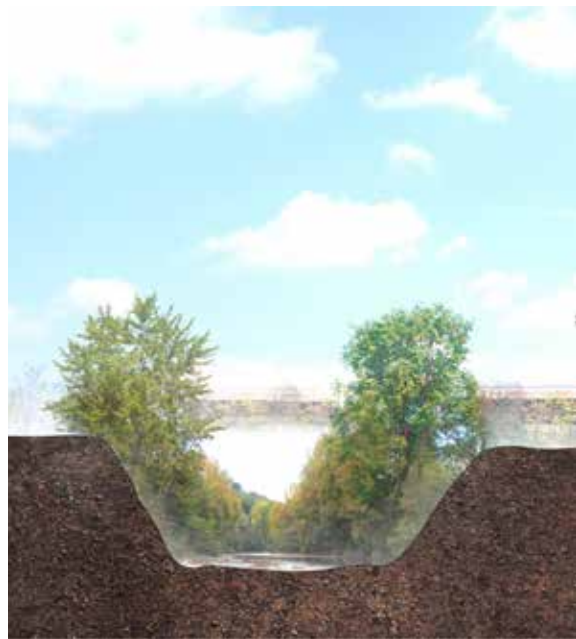




interpretare sistemi territoriali e luoghi

* Marzeno, Iuav 2016





avvicinamenti progressivi
Natisone, studi preliminari, Università Iuav di Venezia

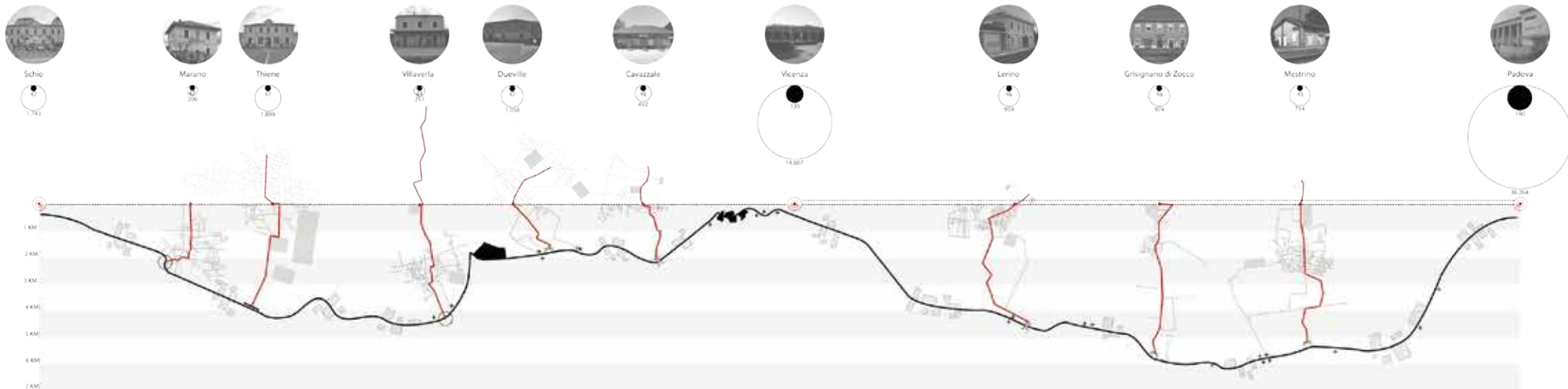
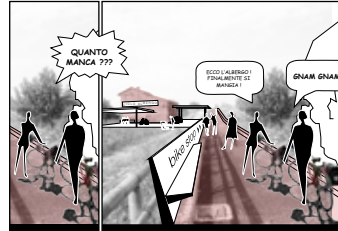
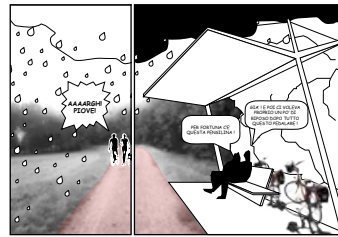
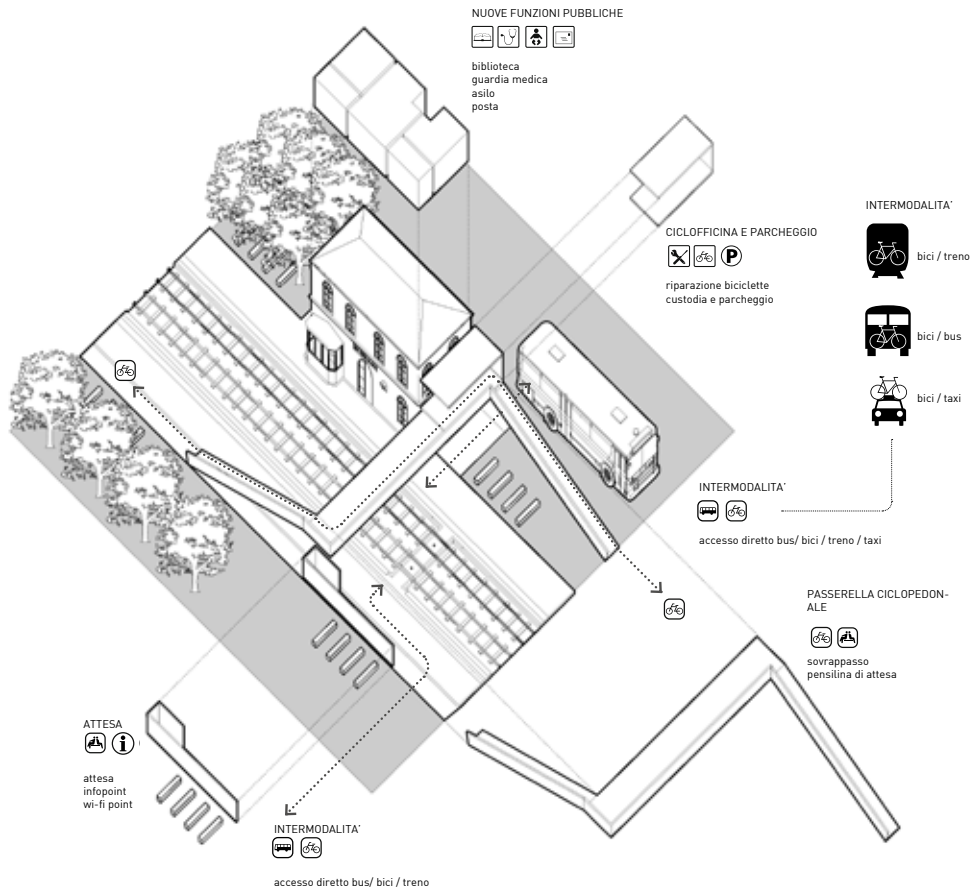
avvicinamenti progressivi

* Natisone, Iuav 2019



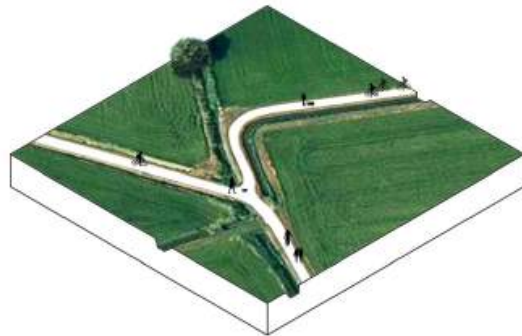
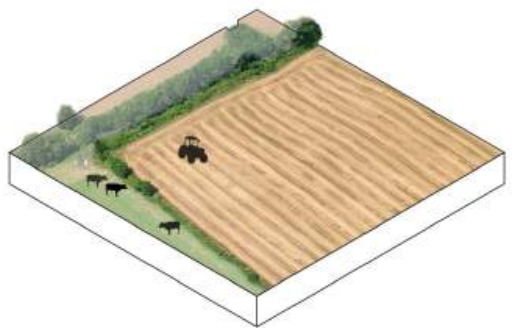
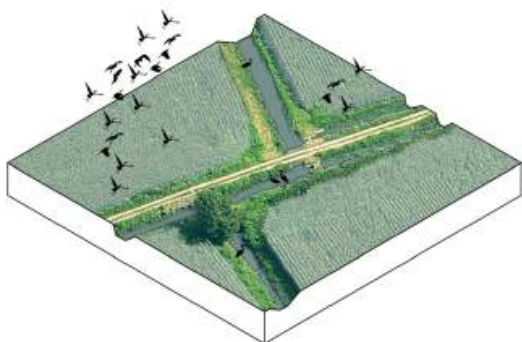
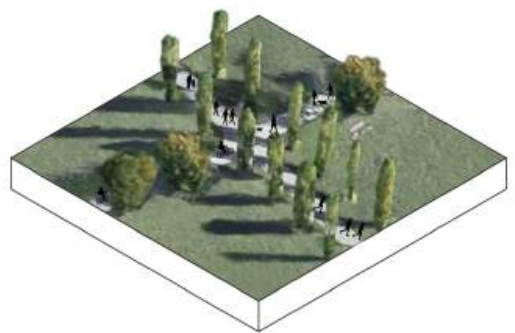
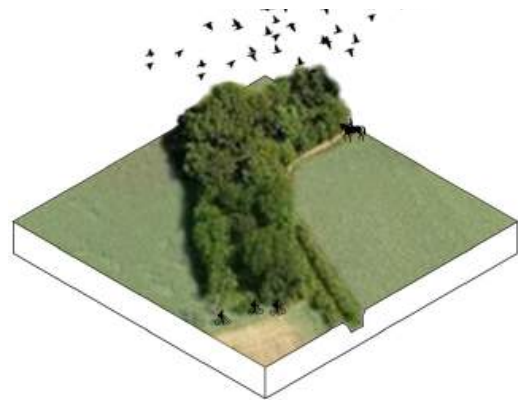
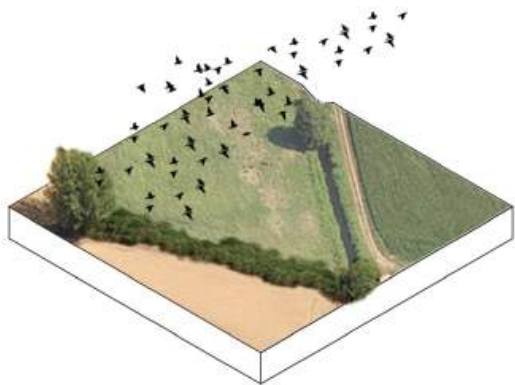
linee guida | progetti pilota

* Bacchiglione, Iuav 2015



linee guida | progetti pilota

* Lambro, PoliMi 2016



organizzazione attività

9:00 > 17:00
sopralluoghi guidati:
5 itinerari attraverso
la Dora

18:00 > 20:00
discussioni aperte

1a giornata

9:00 > 17:00
lavoro

18:00 > 20:00
discussioni aperte

2a giornata

9:00 > 17:00
lavoro

18:00 > 20:00
discussioni aperte

3a giornata

**serata di
apertura**

**primi esiti
confronto**

13 . 09

14 . 09

15 . 09

16 . 09

17 . 09